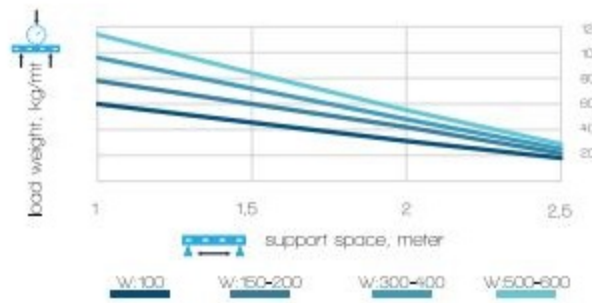


H: 110 - T:4,5mm Wire Mesh Cable Tray Load Graph

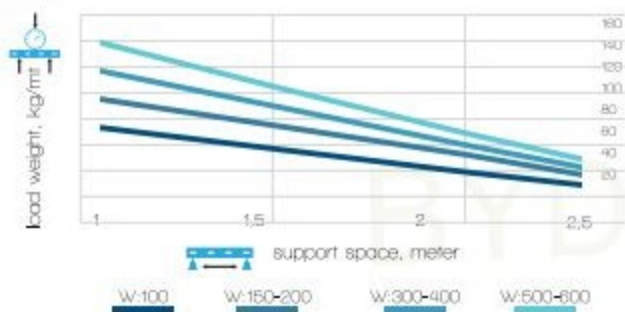


Material & Finish Options:

- HDG : hot dip galvanised EN ISO 1461
- SS : stainless steel AISI 304
- EP : epoxy painted - RAL

Model Number	Width (W) (mm)	Wire Diameter (D) (mm)	Weight kg/m	Minimum Package	Order Code (EG)	Order Code (HDG)	Order Code (SS)
TOK 110 45	100	4,50	1,260	12 m	1800 11 100 45 7	1800 11 100 45 2	1800 11 100 45 4
TOK 115 45	150	4,50	1,342	12 m	1800 11 150 45 7	1800 11 150 45 2	1800 11 150 45 4
TOK 120 45	200	4,50	1,597	6 m	1800 11 200 45 7	1800 11 200 45 2	1800 11 200 45 4
TOK 125 45	250	4,50	1,769	6 m	1800 11 250 45 7	1800 11 250 45 2	1800 11 250 45 4
TOK 130 45	300	4,50	1,939	6 m	1800 11 300 45 7	1800 11 300 45 2	1800 11 300 45 4
TOK 140 45	400	4,50	2,281	6 m	1800 11 400 45 7	1800 11 400 45 2	1800 11 400 45 4
TOK 150 45	500	4,50	2,624	6 m	1800 11 500 45 7	1800 11 500 45 2	1800 11 500 45 4
TOK 160 45	600	4,50	2,966	6 m	1800 11 600 45 7	1800 11 600 45 2	1800 11 600 45 4
TOK 660 45	600	4,50	2,789	6 m	1800 60 600 45 7	1800 60 600 45 2	1800 60 600 45 4

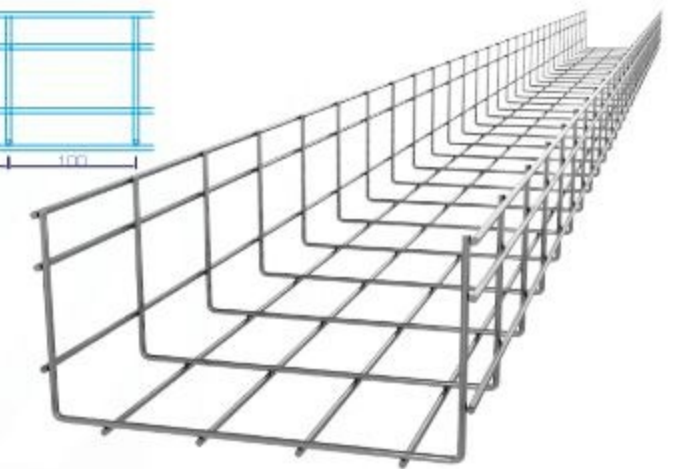
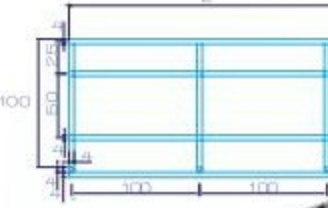
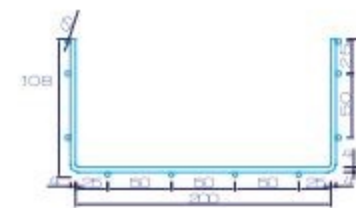
H: 110 - T:5mm Wire Mesh Cable Tray Load Graph



Material & Finish Options:

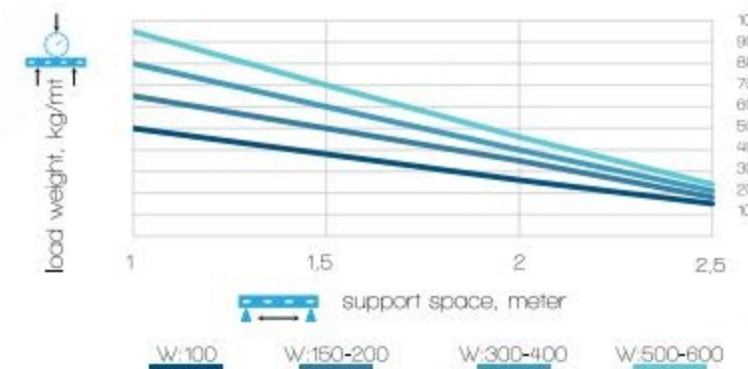
- HDG : hot dip galvanised EN ISO 1461
- SS : stainless steel AISI 304
- EP : epoxy painted - RAL

Model Number	Width (W) (mm)	Wire Diameter (D) (mm)	Weight kg/m	Minimum Package	Order Code (EG)	Order Code (HDG)	Order Code (SS)
TOK 110 50	100	5,00	1,890	12 m	1800 11 100 50 7	1800 11 100 50 2	1800 11 100 50 4
TOK 115 50	150	5,00	2,012	12 m	1800 11 150 50 7	1800 11 150 50 2	1800 11 150 50 4
TOK 120 50	200	5,00	2,396	6 m	1800 11 200 50 7	1800 11 200 50 2	1800 11 200 50 4
TOK 125 50	250	5,00	2,653	6 m	1800 11 250 50 7	1800 11 250 50 2	1800 11 250 50 4
TOK 130 50	300	5,00	2,485	6 m	1800 11 300 50 7	1800 11 300 50 2	1800 11 300 50 4
TOK 140 50	400	5,00	2,922	6 m	1800 11 400 50 7	1800 11 400 50 2	1800 11 400 50 4
TOK 150 50	500	5,00	3,359	6 m	1800 11 500 50 7	1800 11 500 50 2	1800 11 500 50 4
TOK 160 50	600	5,00	3,796	6 m	1800 11 600 50 7	1800 11 600 50 2	1800 11 600 50 4



Model Number	Width (W) (mm)	Wire Diameter (D) (mm)	Weight kg/m	Minimum Package	Order Code (EG)	Order Code (HDG)	Order Code (SS)
TOK 110 40	100	4,00	1,050	12 m	1800 11 100 40 7	1800 11 100 40 2	1800 11 100 40 4
TOK 115 40	150	4,00	1,118	12 m	1800 11 150 40 7	1800 11 150 40 2	1800 11 150 40 4
TOK 120 40	200	4,00	1,331	6 m	1800 11 200 40 7	1800 11 200 40 2	1800 11 200 40 4
TOK 125 40	250	4,00	1,474	6 m	1800 11 250 40 7	1800 11 250 40 2	1800 11 250 40 4
TOK 130 40	300	4,00	1,616	6 m	1800 11 300 40 7	1800 11 300 40 2	1800 11 300 40 4
TOK 140 40	400	4,00	1,901	6 m	1800 11 400 40 7	1800 11 400 40 2	1800 11 400 40 4
TOK 150 40	500	4,00	2,187	6 m	1800 11 500 40 7	1800 11 500 40 2	1800 11 500 40 4
TOK 160 40	600	4,00	2,472	6 m	1800 11 600 40 7	1800 11 600 40 2	1800 11 600 40 4
TOK 660 40	600	4,00	2,324	6 m	1800 60 600 40 7	1800 60 600 40 2	1800 60 600 40 4

H: 110 - T:4mm Wire Mesh Cable Tray Load Graph



Standard length of trays 3000 mm, on request: 2000mm- 2500mm-2900mm

Material & Finish Options:

- HDG : hot dip galvanised EN ISO 1461
- SS : stainless steel AISI 304
- EP : epoxy painted - RAL