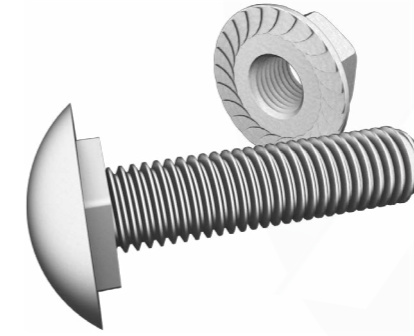


Rounded Head Square Neck Bolt & Flanged Nuts

Yuvarlak Başlı Kare Boyunlu Kanal Cıvatası ve Flaşlı Somun

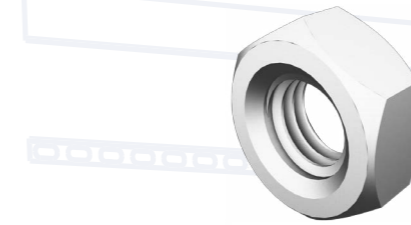


Model Number	Dimensions (mm)	Weight kg/pcs	Order Code (EG)
CS M6	M6	0,01	9000 06 015 00 7
CS M8	M8	0,01	9000 08 015 00 7

DACROMET & INOX options are available on request

Hex Nuts

Somun

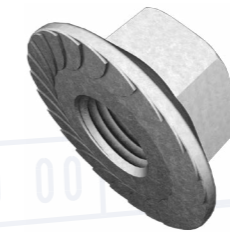


Model Number	Dimensions (mm)	Weight kg/pcs	Order Code (EG)
S M6	M6	0,00	9001 06 000 00 7
S M8	M8	0,01	9001 08 000 00 7
S M10	M10	0,01	9001 10 000 00 7
S M12	M12	0,02	9001 12 000 00 7

DACROMET & INOX options are available on request

Flanged Nuts

Flaşlı Somun



Model Number	Dimensions (mm)	Weight kg/pcs	Order Code (EG)
FS M6	M6	0,00	9002 06 000 00 7
FS M8	M8	0,01	9002 08 000 00 7
FS M10	M10	0,01	9002 10 000 00 7
FS M12	M12	0,02	9002 12 000 00 7

DACROMET & INOX options are available on request

Flat washers

Pul



Model Number	Dimensions (mm)	Weight kg/pcs	Order Code (EG)
P M6	M6	0,00	9011 06 000 00 7
P M8	M8	0,00	9011 08 000 00 7
P M10	M10	0,00	9011 10 000 00 7
P M12	M12	0,01	9011 12 000 00 7

DACROMET & INOX options are available on request

Mounting & Fasteners
Montaj & tespit Sistemleri

Spring lock washers

Yaylı Rondela



Model Number	Dimensions (mm)	Weight kg/pcs	Order Code (EG)
YP M6	M6	0,00	9012 06 000 00 7
YP M8	M8	0,00	9012 08 000 00 7
YP M10	M10	0,00	9012 10 000 00 7
YP M12	M12	0,01	9012 12 000 00 7

DACROMET & INOX options are available on request

Splinte Pins

Kopilya

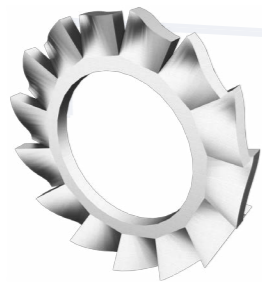


Model Number	Dimensions (mm)	Weight kg/pcs	Order Code
KOP	M6	0,07	9030 06 025 00 7

INOX options are available on request

Serrated Lock Washer

Tırtıllı Rondela



Model Number	Dimensions (mm)	Weight kg/pcs	Order Code (EG)
TP M6	M6	0,00	9013 06 000 00 7
TP M8	M8	0,00	9013 08 000 00 7
TP M10	M10	0,00	9013 10 000 00 7
TP M12	M12	0,01	9013 12 000 00 7

DACROMET & INOX options are available on request

Drop in Anchor

Çakmalı dübel

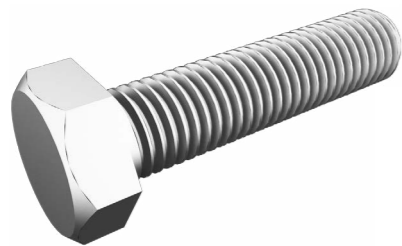


Model Number	Dimensions (mm)	Weight kg/pcs	Order Code
CD M6	M6 x 20	0,07	9040 06 020 00 7
CD M8	M8 x 30	0,01	9040 08 030 00 7
CD M10	M10 x 40	0,02	9040 10 040 00 7
CD M12	M12 x 50	0,05	9040 12 050 00 7

INOX options are available on request

Hex Bolts

Civata

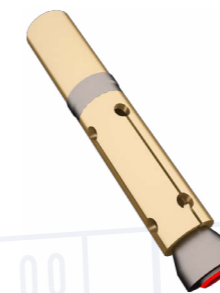


Model Number	Dimensions (mm)	Weight kg/pcs	Order Code
AC M6 25	M6 x 25	0,070	9020 06 025 00 7
AC M6 40	M6 x 40	0,10	9020 06 040 00 7
AC M8 25	M8 x 25	0,014	9020 08 025 00 7
AC M8 40	M8 x 40	0,020	9020 08 040 00 7
AC M8 60	M8 x 60	0,028	9020 08 060 00 7
AC M10 25	M10 x 25	0,024	9020 10 025 00 7
AC M10 30	M10 x 30	0,028	9020 10 030 00 7
AC M10 40	M10 x 40	0,034	9020 10 040 00 7
AC M10 60	M10 x 60	0,050	9020 10 060 00 7
AC M12 25	M12 x 25	0,034	9020 12 025 00 7
AC M12 30	M12 x 30	0,039	9020 12 030 00 7
AC M12 40	M12 x 40	0,050	9020 12 040 00 7
AC M12 60	M12 x 60	0,070	9020 12 060 00 7
AC M12 80	M12 x 80	0,090	9020 12 080 00 7

DACROMET & INOX options are available on request

Draw in Anchor

Çekmeli dübel

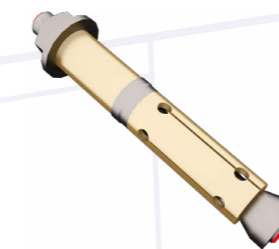


Model Number	Dimensions (mm)	Weight kg/pcs	Order Code
SD M6	M6 x 45	0,01	9041 06 045 00 7
SD M8	M8 x 57	0,02	9041 08 057 00 7
SD M10	M10 x 63	0,03	9041 10 063 00 7
SD M12	M12 x 75	0,05	9041 12 075 00 7

INOX options are available on request

Sleeve Anchor

Saç Gömleklİ Dübel

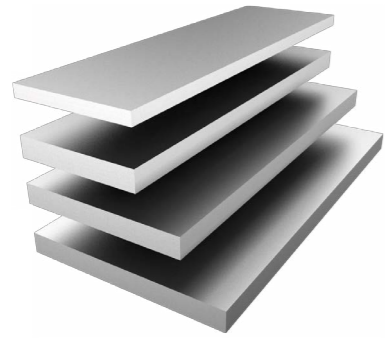


Model Number	Dimensions (mm)	Weight kg/pcs	Order Code
GD M6 45	M6 x 45	0,01	9042 06 045 00 7
GD M8 55	M8 x 55	0,02	9042 08 055 00 7
GD M10 70	M10 x 70	0,03	9042 10 070 00 7
GD M12 90	M12 x 90	0,05	9042 12 090 00 7

INOX options are available on request

Steel Bars

Silme Demir

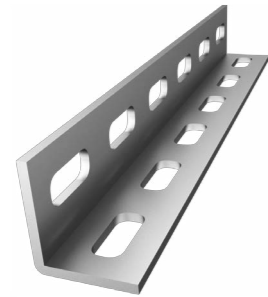
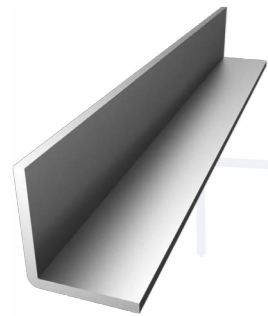


Model Number	Width (W) (mm)	Thickness (T) (mm)	"Weight kg/pcs"	"Order Code (HDG)"
SD 30x3	30	3,00	0,707	4910 00 030 30 2
SD 30x5	30	5,00	1,178	4910 00 030 50 2
SD 40x5	40	5,00	1,570	4910 00 040 50 2
SD 50x5	50	5,00	1,963	4910 00 050 50 2

Standard length 6000 mm; on request any lengths between 100-5900mm

L Profile

Köşebent

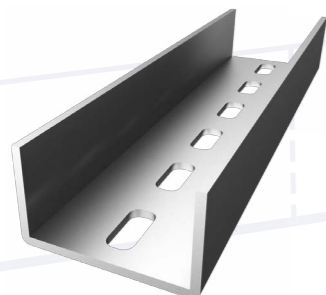
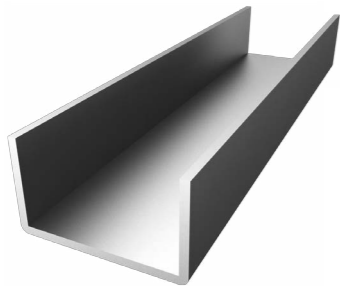


Model Number	Dimensions (mm)	Thickness (T) (mm)	"Weight kg/pcs"	"Order Code (HDG)"
LD 25x25x3	25x25	3,00	1,120	4920 25 025 30 2
LD 30x30x3	30x30	3,00	1,400	4920 30 030 30 2
LD 30x30x4	30x30	4,00	1,780	4920 30 030 40 2
LD 40x40x4	40x40	4,00	2,420	4920 40 040 40 2
LD 50x50x5	50x50	5,00	3,770	4920 50 050 50 2
LD 40x40x4 D	40x40	4,00	2,420	4921 40 040 40 2
LD 50x50x5 D	50x50	5,00	3,770	4921 50 050 50 2

Standard length 6000 mm; on request any lengths between 100-5900mm

NPU Profile

NPU Profil



Model Number	Dimensions (mm)	Thickness (T) (mm)	"Weight kg/pcs"	"Order Code (HDG)"
NPU 65x42	65x42	5,50	7,090	4930 42 065 55 2
NPU 80x45	80x45	6,00	8,640	4930 42 080 60 2

Standard length 6000 mm; on request any lengths between 100-5900mm

NPI Profile

NPI Profil

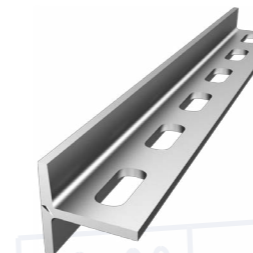
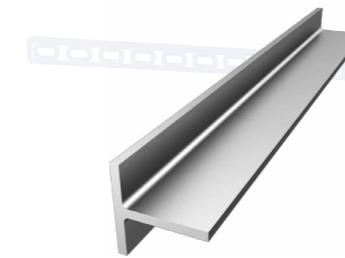


Model Number	Dimensions (mm)	Thickness (T) (mm)	"Weight kg/pcs"	"Order Code (HDG)"
NPI 80x42	80x42	3,90	5,950	4940 42 080 39 2
NPI 100x50	100x50	4,50	8,320	4940 50 100 45 2
NPI 80x42 D	80x42	3,90	5,950	4941 42 080 39 2
NPI 100x50 D	100x50	4,50	8,320	4941 50 100 45 2

Standard length 6000 mm; on request any lengths between 100-5900mm

T Profile

T Profil



Model Number	Dimensions (mm)	Thickness (T) (mm)	"Weight kg/pcs"	"Order Code (HDG)"
TD 40x40x4	40x40	4,00	2,380	4950 40 040 40 2
TD 40x40x4 D	40x40	4,00	2,380	4951 40 040 40 2

Standard length 6000 mm; on request any lengths between 100-5900mm